

# FINNISH QUALITY WORK

M. Korte Oy is a Finnish technology company that manufactures coupling equipment for heavy-duty vehicle combinations under the TAV brand. The cornerstones of our manufacturing have always been safety, user-friendliness and reliability under all possible climate conditions around the world. The roots of the modern TAV product family extend back to the 1970s.

Our production unit is located in Ylöjärvi. Our products are made with high-quality raw materials in co-operation with the best actors in the field. User feedback has been of vital importance to us in the development of the coupling equipment. Thereby, TAV has become one of the most popular suppliers of coupling equipment solutions among transport companies.

Our E-approved product family includes draw beams and their side plates for the frame models of all vehicle manufacturers, coupling heads for drawing trailers and dollies as well as the remote display equipment indicating the safe locking of the coupling equipment.

Our production and the constant quality of our equipment are monitored with an audited quality system.

## CONTACT INFORMATION



## COUPLING EQUIPMENT



## FOR HEAVY USE



**COUPLING  
EQUIPMENT FOR  
THE CHALLENGING  
CONDITIONS**

## M. KORTE OY

Menotie 2, FI-33470 Ylöjärvi

Phone +358 3 371 2347

sales@tav.fi

tav.fi

The coupling equipment factory's direct product support provides expert assistance with coupling equipment issues.

Jarkko Schroderus +358 50 321 8035

Juha Koskinen +358 50 595 1233

TAV.FI



## COUPLING HEADS

### TAV50 JA TAV50D



#### TAV50SR

TAV50 coupling head is approved for drawing trailers equipped with articulated drawbars.



#### TAV50DSR (Dolly)

TAV50D coupling head is approved for drawing dollies, centre-axle trailers and trailers equipped with articulated drawbars.



**TAV5901 servo cylinder** is maintenance free and it works reliably at varying temperatures. Operating temperature range is -40 °C to + 80°C.



**TAV5901 regulating valve** makes it easy to open the coupling head one-handed.

**TAV5850 servo kit** can be installed on the right or left side of the coupling head.

TAV coupling head has been developed to perform under demanding conditions. Continuous development work has achieved an extremely reliable structure.

TAV coupling heads are mainly delivered with a factory-fitted servo set. Only the regulating valve and its pneumatic pipes are left to install. The servo coupling always includes the TAV5900 operating device kit. Also available with manual control.

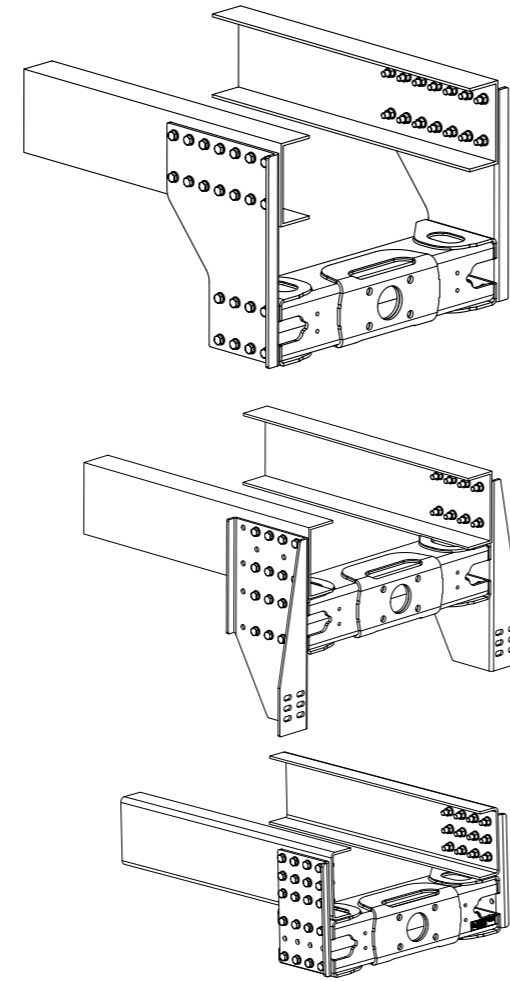
The TAV5001 coupling mouth fulfils the ±90° turning angles specified in the EC directive on mechanical coupling equipment.

The D-value 190 kN of TAV coupling equipment is enough for combinations of a drawing vehicle and a full trailer weighing 76 metric tonnes in total.

The unique suspension with rubber grommets improves driving comfort. TAV rubber grommets are manufactured with the best Finnish rubber mixture and know-how.

The TAV5810 servo's edged protective plate (standard) can also be replaced with a TAV5810S straight protective plate.

**TAV's product warranty covers all factory and material defects for a period of two years.**



DRAWBEAM	LENGTH (mm)	WEIGHT (kg)
TAV742	742	46
TAV752	752	47
TAV760	760	47
TAV770	770	48
TAV784	784	49
TAV790	790	49
TAV800	800	49
TAV834	834	50
TAV850	850	51
TAV885	885	52

Other frame widths can be achieved using spacer plates between the sideplate and drawbeam.  
1 mm, 1.5 mm, 2 mm, 4 mm and 6 mm.  
Max. 10 mm per side.

## MOUNTING PARTS

Our product range includes various side plate options for drawbeam installation.

Find the right side plate and bolt kit easily at our web site [tav.fi](http://tav.fi)



TAV drawbeam B190 for coupling head installation. Suitable for EU class C50-6, Nordic trailers and centre-axle trailers.

#### Technical specifications:

D (kN): 190  
Dc (kN): 120  
S (kg): 1000  
V (kN): 50

**TAV710** underrun protection is delivered with the installation supplies needed.

## ACCESSORIES

Find more products at [tav.fi](http://tav.fi)

**E-approved TAV5960 locking sensor kits** for TAV coupling heads.

Model specific kits: DAF, IVECO, MAN, MB, SISU, RENAULT, SCANIA, VOLVO. The universal model also available.

With the indicator light kit, the driver can see from the driving cab indicator light whether the coupling head is locked.

Can be installed in the place of a cover on an empty switch spot on the dashboard.



**TAV5812 slewing flange** allows the servo cylinder to be installed in different positions in the coupling head.



#### TAV5100 AUTOMATIC CENTRAL LUBRICATION SYSTEM

- A part of the standard delivery of all coupling heads.
- Automatic operation for a period specified by the user (1–12 months).
- The lubricant feeding speed can be adjusted during operation.
- The lubricant feed can be interrupted and restarted as needed.
- The transparent dispenser makes it easy to check the lubricant level.
- The dispenser even works under water.
- The automatic central lubrication system is easy to install into the system.

